

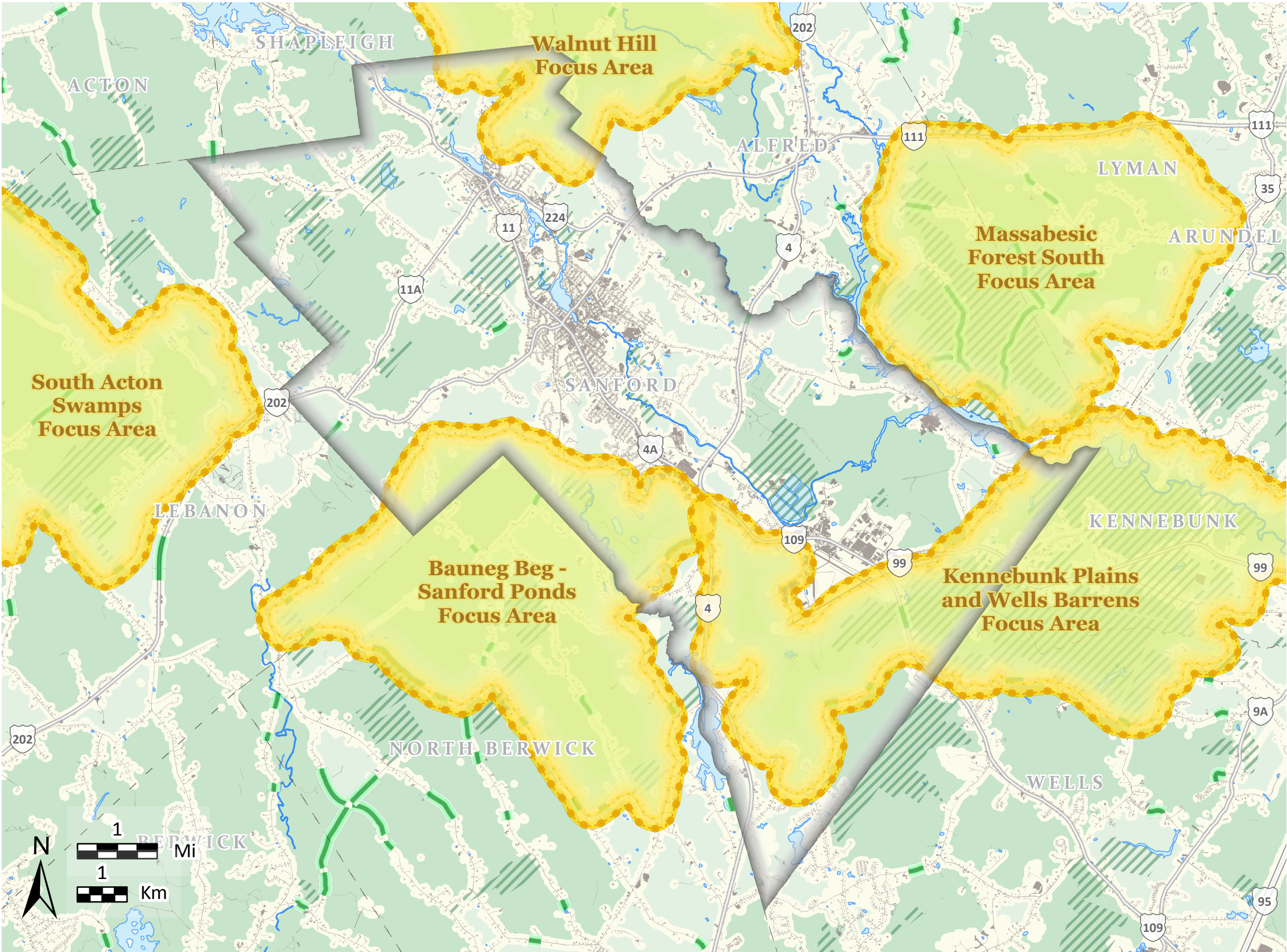
Sanford

Habitat Connectivity



Beginning with Habitat (BwH)
equips Maine communities, landowners, and conservation partners with tools to protect, restore, and connect important habitats and ecosystems in a changing climate.
www.beginningwithhabitat.org

- Organized Towns
- Area of Interest
- Impervious Surface
- Focus Areas of Statewide Ecological Significance
- Conserved Lands
 - Fee and Easement Conservation Land
- Habitat Blocks
 - Comprehensive Plan Review Criteria Rule (DACF Chapter 208) requires blocks >500 acres be considered important natural resources for town comprehensive planning.
 - 0-500 Acres
 - 500 + Acres
- Development Buffer
- Habitat Connectors
 - Likely Road Crossing Areas for Wildlife



This map is nonregulatory and is intended for planning purposes only

April 2025

TOWNSHIP BOUNDARIES - ME Office of GIS (2021)
IMPERVIOUS CCAP NOAA - impervious land cover (2022)
HYDROLOGY - US Geological Survey (2016)
UNDEVELOPED HABITAT BLOCKS & CONNECTORS - ME Dep of Inland Fisheries and Wildlife (2020)
ROAD STREAM CROSSINGS - ME Dep. of Inland Fisheries and Wildlife (2022)

CONSERVATION LANDS - ME Dept of Ag., Cons., and For., Land Use Planning Comm'n, ME Dep. of Inland Fisheries and Wildlife (2024)